



# Body Butter 4oz



Submitted By: ProFusion CBD + Wellness

Date Tested: 01/25/2019

Test Result UID: 0019372

State Lot ID:

THC Total: ND

CBD Total: 0.39%

Total Detected  
Cannabinoids: 0.39%

Terpene Total: 0.204%

Total Solvents: ND ppm

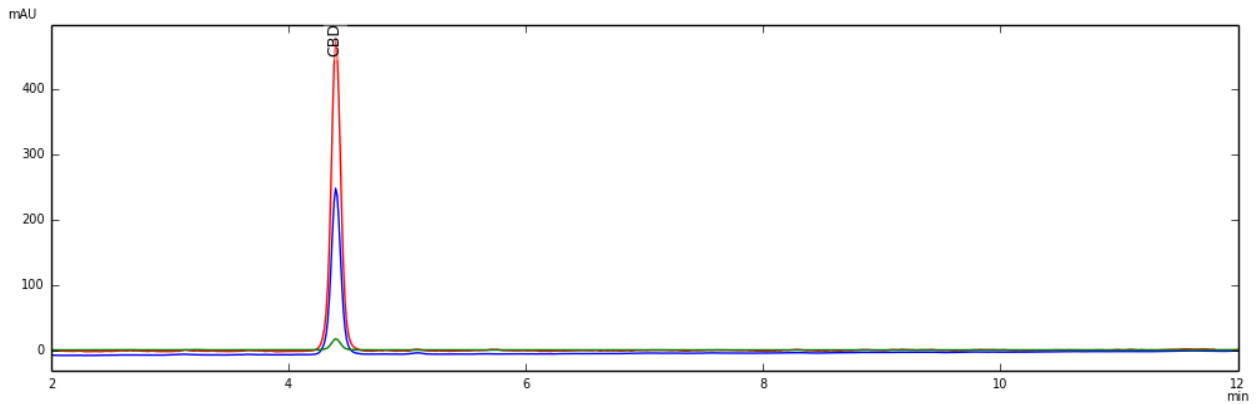
Mycotoxins: Pass

Microbial: Pass

Percent

mg/g

# HPLC Chromatogram



## Potency Profile

$\Delta^9$ -THC-A	ND
$\Delta^9$ -THC	ND
<b>THC TOTAL</b>	ND
(THC-A * 0.877 + THC) <sup>1</sup>	
CBD-A	ND
CBD	0.39%
<b>CBD TOTAL</b>	0.39%
(CBD-A * 0.877 + CBD) <sup>1</sup>	
CBG-A	ND
CBG	ND
<b>CBG TOTAL</b>	ND
(CBG-A * 0.878 + CBG) <sup>1</sup>	
CBDV-A	ND
CBDV	ND

## CBDV TOTAL

ND

(CBDV-A \* 0.878 + CBDV)<sup>1</sup>

CBC

ND

CBN

ND

THCV

ND

D8THC

ND

## ACTIVATED TOTAL

0.39%

( $\Delta^9$ THC + CBN + CBD + CBG + CBC + THCV + CBDV)<sup>2</sup>

## Total Detected Cannabinoids

0.39%

(CBDV TOTAL + THC TOTAL + CBD TOTAL + CBG TOTAL + D8THC + CBN + CBC + THCV)

1 - Cannabinoid totals are adjusted to account for the decarboxylation of the cannabinoid acids. The reported total is the amount of the activated cannabinoid that would be if all of the carboxylic acid has been removed through decarboxylation.

2 - Cannabinoids that have been activated through decarboxylation (curing/storage of flowers, or heating/cooking of edibles, tinctures, & concentrates)

## Moisture Analysis

Loss on drying:

Not Tested

Water Activity:

Not Tested

## Terpene Profile

Linalool

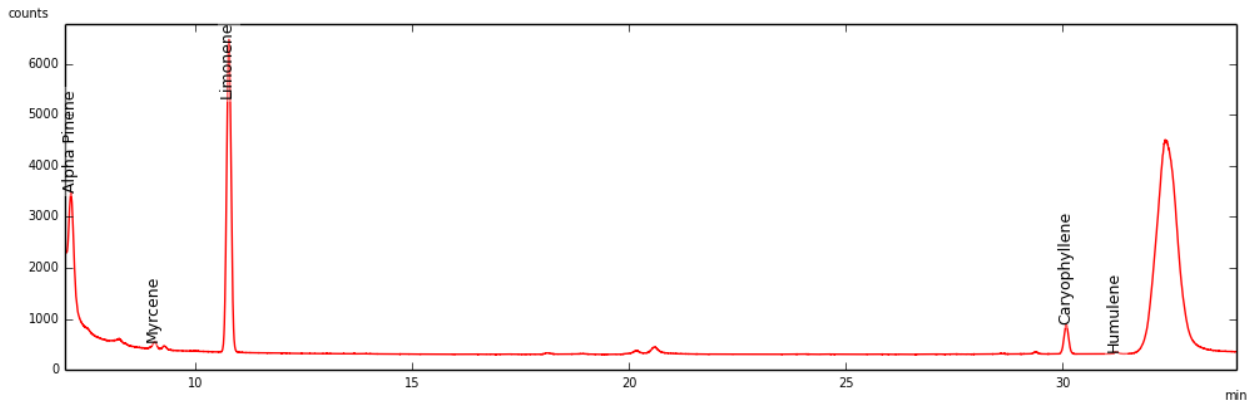
ND

Ocimene

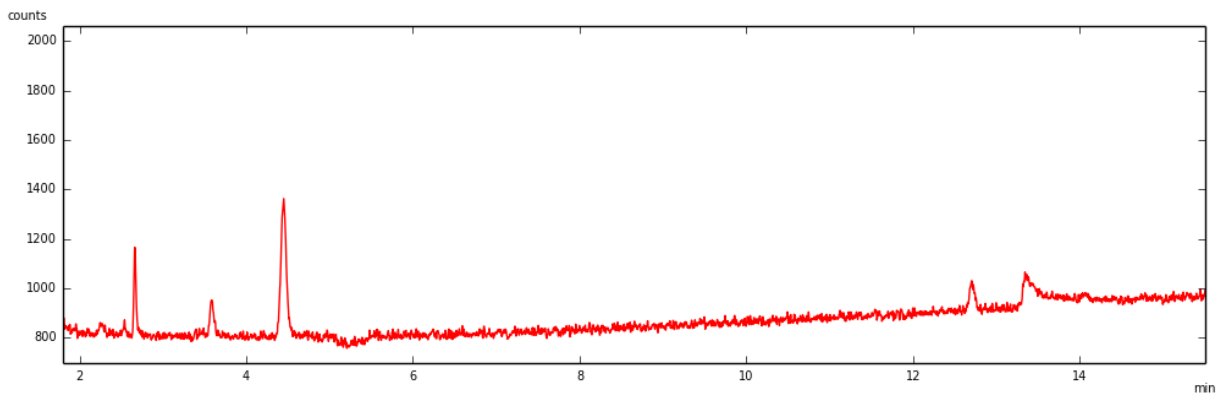
ND

Myrcene	0.002%
Limonene	0.110%
Terpinolene	ND
Alpha Pinene	0.030%
Beta Pinene	ND
Humulene	0.004%
Caryophyllene	0.058%
<b>TERPENE TOTAL</b>	<b>0.204%</b>

### GC Terpene Chromatogram



### GC Solvent Chromatogram



## Residual Solvent Test

Propane	ND ppm
Isobutane	ND ppm
Butane	ND ppm
Ethanol	Not Tested ppm
Acetone	ND ppm
Pentane	ND ppm
Isopentane	ND ppm
Isopropanol	ND ppm
Hexane	ND ppm
Heptane	ND ppm
Methanol	ND ppm
Acetonitrile	ND ppm

Dichloromethane	ND ppm
Ethyl Acetate	ND ppm
Tetrahydrofuran	ND ppm
Chloroform	ND ppm
Cyclohexane	ND ppm
Benzene	ND ppm
Toluene	ND ppm
Ethyl Benzene	ND ppm
m- and p- Xylenes	ND ppm
o-Xylene	ND ppm
<b>Total Xylenes</b>	<b>ND ppm</b>
<b>SOLVENT TOTAL</b>	<b>ND ppm</b>

## Mycotoxin Analysis

Total Aflatoxins:	< LOQ ppb	Pass
Ochratoxin:	ND ppb	Pass